


2025 ANNUAL REPORT

Connecting People and Purpose

Agriculture 
in the Classroom
Connecting Kids and Agriculture

A NOTE FROM LEADERSHIP



Sara Shymko, Executive Director

At AITC-SK, we believe that meaningful connections create lasting change. In 2025, we deepened relationships with students, educators, partners, and communities, building a foundation where purpose drives action and learning extends beyond the classroom. These connections inspire curiosity, foster understanding, and create opportunities for collaboration that extend across the province.

Guided by a new three-year strategic plan, we are moving forward with momentum. Anchored in four pillars – Deepen Impact, Build Financial Resilience, Cultivate Champions, and Expand Capacity – this plan empowers us to strengthen our work, inspire those around us, and create enduring impact for Saskatchewan’s future.



Dean Elliott, Chairperson

Throughout 2025, the Board witnessed the power of purposeful collaboration. By supporting strong partnerships and ensuring depth across programs, AITC-SK continues to deliver meaningful and measurable impact for students, educators, and communities across Saskatchewan.

The Board remains committed to responsible stewardship and strategic oversight, ensuring every decision strengthens sustainability and organizational resilience. With the launch of the new three-year strategic plan, we are confident that AITC-SK is well positioned to lead with focus, cultivate champions, and expand its capacity – building a foundation for lasting impact in the years ahead.



CONNECTING PEOPLE AND PURPOSE

The future of agriculture begins in today's classrooms.

When students understand where food comes from and why it matters, learning extends beyond the curriculum and into daily life. Students begin to make informed choices—reducing food waste, reading labels with purpose, and understanding how agriculture connects to their health, communities, and the world around them.

The impact reaches beyond students. Teachers are supported with meaningful, curriculum-aligned tools that build confidence and relevance in the classroom. Industry benefits from a future generation that understands agriculture, values its role, and is better equipped to engage with it thoughtfully.

At the heart of this work is a shared purpose. Agriculture in the Classroom – Saskatchewan brings together educators, industry, and community partners around a common goal: creating informed, engaged learners who understand agriculture and care about its future. By building understanding and connection early, we are driving lasting change—shaping how students think and act, how teachers teach, and how the agriculture industry is valued for generations to come.

BEYOND THE STATS

This past year, AITC-SK created meaningful connections, hands-on learning, and lasting impact across Saskatchewan classrooms, helping students understand agriculture and its role in their everyday lives.

Connect

We built strong, trusted connections with educators, organizations, volunteers, & communities to make learning relevant & real.

Grow

Our team grew more strategic and innovative in designing & delivering hands-on, science-based initiatives.

Impact

Each visit, resource, & partnership supported teachers & helped students care about agriculture & their role in its future.

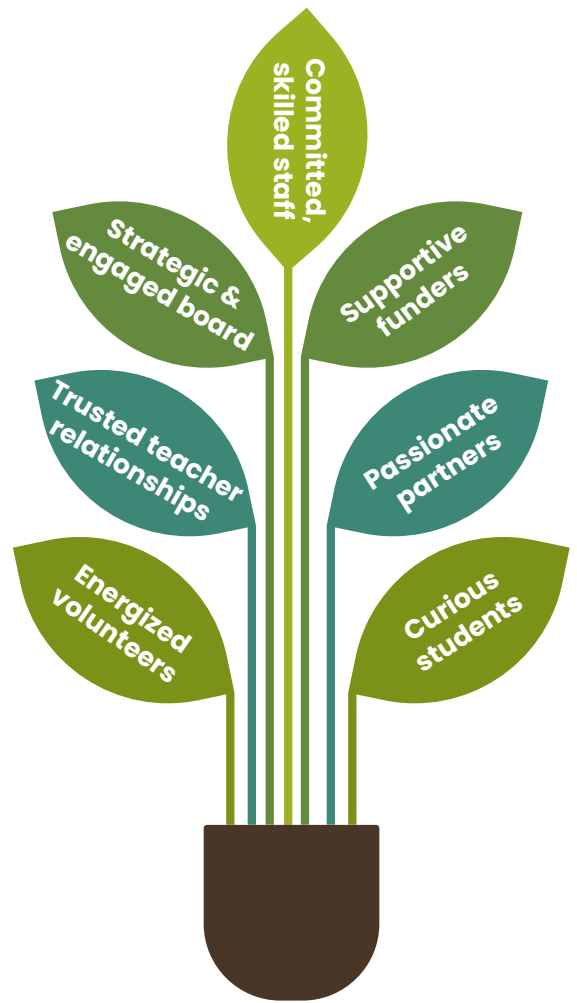


“AITC-SK provides engaging, easy-to-use resources that help students make real-world connections and understand the role of agriculture in Saskatchewan. Students leave lessons curious, thoughtful, and equipped to apply what they learn across subjects and in their daily lives.”

— *Kessa Fillo, Grade 5 Teacher,
Chief Whitecap School*

GROWING IMPACT TOGETHER

Behind every success in Saskatchewan's classrooms are the people and partnerships that make it possible. Our staff and board, alongside teachers, volunteers, funders, and partners, make this work possible. **Together, we are connecting students to real-world agriculture across the province.**



OUR ROLE IN AITC-CANADA

This year, Agriculture in the Classroom Canada (AITC-C) transitioned to an independent, skills-based Board of Directors, strengthening national governance and long-term sustainability. As part of this shift, provincial members, including AITC-SK, now serve on a national Program Advisory Committee, ensuring regional expertise helps guide national priorities, programs, and resources across the country. Through this transition, AITC-SK has demonstrated strong leadership, contributing nationally while delivering impactful, locally relevant programming.



PURPOSEFUL INVESTMENT. PROVINCIAL IMPACT.

Through purposeful investment, we are bringing agriculture into classrooms across Saskatchewan in meaningful ways. These experiences are helping young people understand where their food comes from, how modern agriculture works, and why it matters to the province's economy and future.

In 2025, Agriculture in the Classroom Saskatchewan delivered **401,000** curriculum-aligned agriculture learning experiences across classrooms, communities, and digital platforms throughout the province.



401,000
agriculture learning
experiences
delivered in 2025



Our reach closely reflects Saskatchewan's population – **67% urban and 33% rural**.

From city classrooms to rural schools, many students have limited understanding of modern food production and agriculture's role in Saskatchewan's economy. AITC-SK strengthens agriculture literacy where it is needed most.

DEPTH WHERE IT MATTERS: CLASSROOMS

Direct Classroom Engagement

Our programs and resources evolve with intention, reflecting changing classroom needs and the agriculture industry. By refining approaches, deepening learning experiences, and strengthening engagement, we enhance relevance and ensure every interaction drives meaningful outcomes for students and educators.



1,890

educators engaged
in agriculture
education



80,840

students reached
through registered
educators



311,000

curriculum-
aligned classroom
experiences

This includes classroom programs, digital downloads, and physical learning materials ordered, delivered, and implemented by educators across the province.

Trusted by Educators

63%

implemented more than one AITC-SK
program or resource in 2025

76%

have reused and recommended
AITC-SK resources (n=191)

840

educators
engaged in
5+ initiatives

100%

are more likely to continue incorporating AITC-SK
programming after participation in a Fall Program (n=191)

EXTENDED AND COMMUNITY REACH

Agriculture education extends beyond the classroom walls.

In 2025, AITC-SK expanded access through school divisions, libraries, youth organizations, public events, and digital platforms – reaching an estimated **34,670 additional youth across Saskatchewan**.



By working through trusted networks, AITC-SK ensures agriculture literacy reaches families, newcomers, urban centres, and rural communities alike.

SOCIAL & WEBSITE REACH



14,800+ followers on social media



3,900+ educator & 550+ partner newsletter subscribers



23,400 annual website users



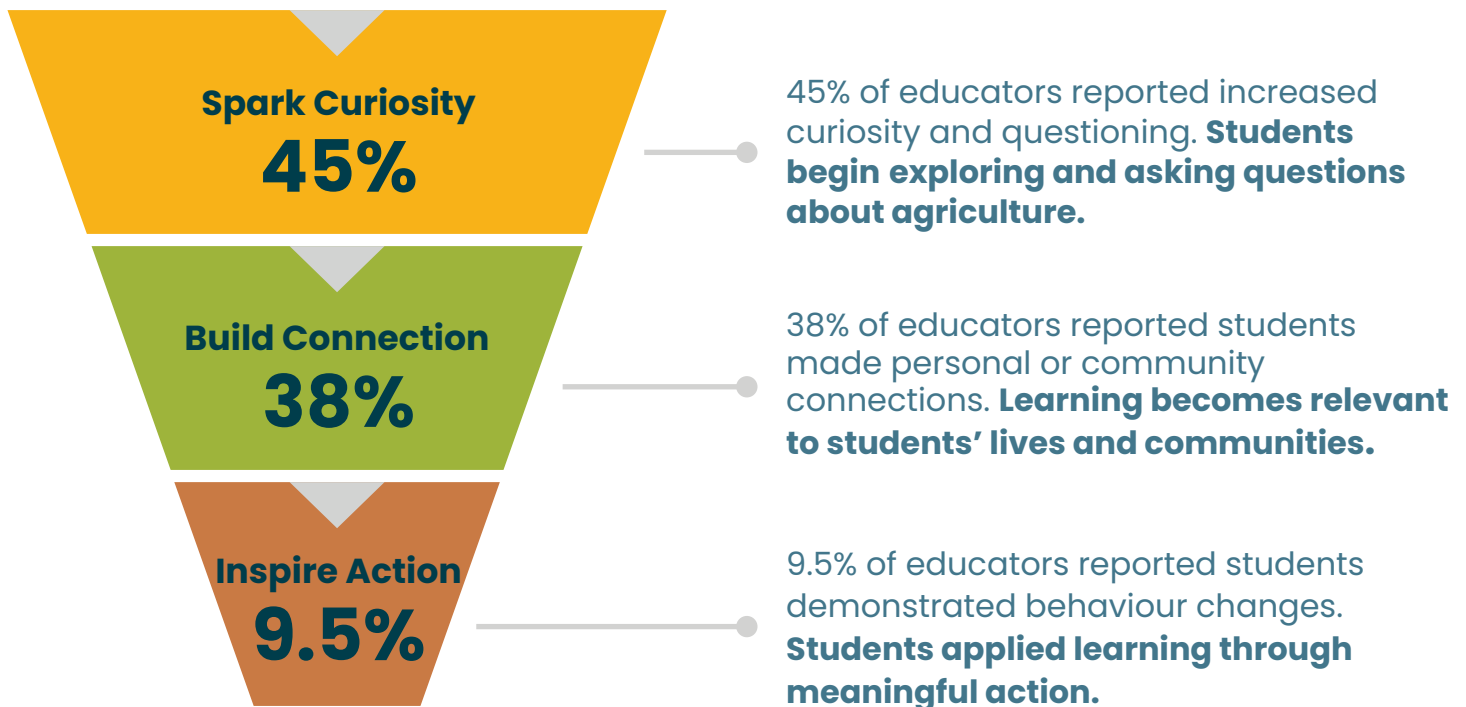
63,053 annual page views

MEASURING WHAT MATTERS

In 2025, we shifted from just measuring reach to understanding impact, recognizing that student learning progresses from awareness to action.

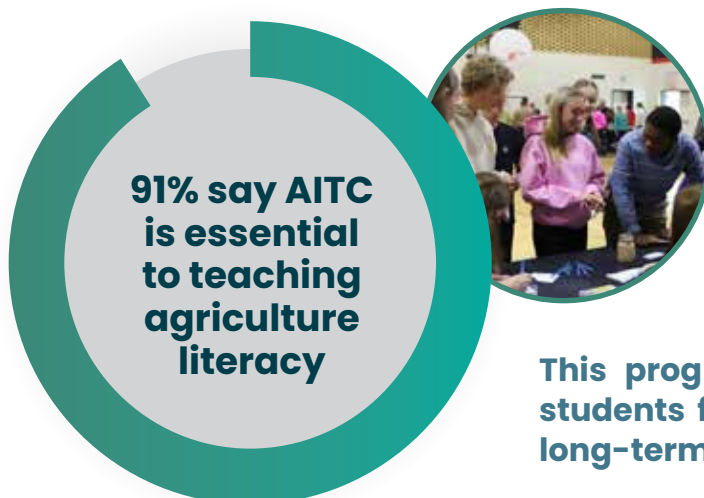
Student Impact Pathway

Student impact develops in stages beginning with curiosity, growing into personal connection, and leading to meaningful behaviour change.



Based on educator-reported outcomes from Fall 2025 programming (n=191).

Educator Validation



Educators reported that AITC programming plays a key role in their ability to teach agriculture literacy (n = 71). This reinforces that our programs, resources, and initiatives are not only engaging students, but equipping teachers to deliver real-world learning experiences.

This progression demonstrates how AITC-SK moves students from awareness to action, the foundation of long-term impact in agriculture literacy.

HIGHLIGHTS

Across Saskatchewan, our programs and resources bring people together around a shared purpose—connecting classrooms, communities, and agriculture through meaningful, real-world learning.

Through three key pillars, **Connect, Grow, and Impact**, we highlight how we strengthened relationships, evolved as an organization, and delivered outcomes for students and educators. Together, these themes reflect our commitment to advancing agricultural literacy across Saskatchewan.



GROW



CONNECT

IMPACT



“Taking my students out of the city to see all of the hard work that goes into the food that they eat was an eye-opening experience for us all!”

**— Mackenzie Aarrestad, Teacher
Saskatoon Public Schools**

Connect

Strong relationships are at the heart of every learning experience. By connecting people across classrooms, communities, and the agriculture sector, we enable collaborative learning, and create experiences that leave a lasting impact on students, educators, and communities across Saskatchewan.



Canadian Agriculture Literacy Month (CALM)

"CALM is a unique opportunity for farmers and ranchers to connect with the youth in their surrounding communities. Even if you live in a rural or ag-based community, sharing your story will help students create a deeper connection to agriculture. Interactions like this build passion and respect for the industry."

- Danyka Maurer, CALM Volunteer - Land and Sky Grains



Food Farm Program

"Over a week later, my students are still talking about the Food Farm experience! They really enjoyed hearing about everything that goes into food production and loved the hands-on learning, especially the planting and gardening. They are super excited to see what will happen to the underwear that was 'planted'!"

- Lorelei Kotylak, Teacher - Balcarres Community School



Food Bank Programs

"The students really enjoyed their program at the Regina Food Hub. They were immersed in the process of budgeting, meal planning and grocery shopping. They learned about the connection between agriculture and social support programs in our community."

- Nicole A., Teacher - Regina Huda School

Grow

Our initiatives evolve with intention, reflecting refinement and thoughtful development. By refining approaches, deepening learning experiences, and strengthening engagement, we enhance relevance and ensure every interaction drives meaningful outcomes for students and educators.



Grains of Saskatchewan Display

"The new Grains Display brings a fresh, engaging dimension to the Agri-Ed Pavilion. Seeing students interact with the hands-on elements and connect their classroom learning to the crops grown across our province is exactly why this work matters. When young people can see, touch, and experience agriculture firsthand, it transforms something that once felt distant into something personal, meaningful, and relevant."

— Shaun Kindopp, CEO, Canadian Western Agribition



Classroom Presentations

"As a rural school division, our board truly appreciates the valuable agricultural resources and opportunities you provide for our teachers and students!"

—Dianne Hahn, Board Chair, Chinook School Division

We continually refine our approach to deliver engaging, curriculum-connected experiences that spark curiosity and deepen learning.



Cheese Making Kits

"Agriculture in the Classroom's Cheesemaking Kit was a popular choice for my Biology 30 students – Student Directed Study Project. Every student who completed the activity was engaged and proud of the cheese they made! It was a lot of fun!"

— Nicole Anderson, Miller Comprehensive High School

Impact

Impact is at the core of every program. By delivering meaningful, hands-on learning experiences, we give students real-world understanding that shapes how they see food, farming, and Saskatchewan's agriculture—creating lasting outcomes for classrooms and communities.



thinkAG Career Expos

"The thinkAG Career Expo is a highlight for my Grade 11 students every year. The expo provides a great perspective on how much variety there is for careers in agriculture. The expo, combined with it being hosted during the Canadian Western Agribition helps the students understand how significant agriculture is in our province."

-Chantelle Wrubleski, Teacher



Ag Experience

"My students were engaged from start to finish. They'll be talking about this day for months!"

- Lindsay Benard, Teacher - Ecole St. Gerard

Ag Experience builds lasting agricultural literacy by immersing students in real-world learning that connects them to food production and our agriculture industry.



Little Green Thumbs

"These resources have been a valuable addition to my classroom. I've used the Little Green Thumbs program along with some of the different class kits, and they've all been fantastic. They are engaging, hands-on, and easy to implement. My students loved the learning experience, and I appreciated how everything was designed with both education and engagement in mind!"

- Jessica Rettman, Teacher - Coronach School

EMPOWERING EDUCATORS

● Teacher Expedition

The Teacher Agriculture Expedition strengthened educators' understanding of Saskatchewan's agriculture and food systems through immersive, hands-on experiences with farmers and agri-businesses. Teachers gained curriculum-aligned knowledge and real-world examples to confidently integrate agriculture into classroom learning.

“ I now have a better understanding about the regulations for food production in Canada. From crops to milk to meat, I feel better and safer about the food I eat. I will continue to choose Canadian-made and grown food products.”

- Teacher Expedition Participant

● Science Workshop

The Science Teacher Workshop expanded educators' awareness of Saskatchewan's ag-biotech sector and its role in science, innovation and food systems. Teachers developed curriculum-aligned insights and practical examples that strengthened learning, deepened student understanding, and encouraged interest in bioscience-related futures.



● **Teacher Convention Sessions**

At teacher conventions, AITC-SK showcases our programs and resources, giving educators hands-on examples of how agriculture can come alive in their classrooms. Teachers also have the opportunity to connect with our team, ask questions, and explore ideas that spark curiosity and learning for their students.

● **Future Educator Workshops**

Future Educator Workshops introduce teacher candidates to our programs and resources, giving them an early understanding of how agriculture connects to learning. Participants leave prepared and inspired, with practical strategies and insights to bring agriculture into their teaching from day one.

Empowered educators plant the seeds for lasting student impact.



GROWING CONNECTIONS ACROSS THE PROVINCE

Strong communities are built through intentional presence and purposeful partnership. Throughout 2025, AITC-SK actively engaged across the province—participating in key industry events, conferences, and sector gatherings to strengthen relationships, and ensure our educational initiatives reflect the evolving priorities of Saskatchewan agriculture.

By showing up, listening, and contributing to important conversations, we continue to build credibility within the industry and expand our reach. These connections not only increase awareness of AITC-SK, but also create opportunities for collaboration that strengthen agricultural education for students across the province.

We attended the following events in 2025 to build awareness and grow our knowledge:

- Women in Ag CONNECT Conference
- Crop Production Show
- Ag in Motion
- Yorkton Harvest Showdown
- Food, Fuel, and Fertilizer Summit
- Buffalo Harvest Ceremony
- Convergence Conference
- Canada's Farm Show
- Canadian Western Agribition
- And many more professional development courses and conferences



GET INVOLVED: BE PART OF THE IMPACT

Creating meaningful impact across Saskatchewan is a shared effort—one that extends beyond the classroom and into communities, farms, ranches, and everyday conversations. It is made possible by individuals, educators, partners, and organizations who believe in the importance of helping students understand where their food comes from and the role agriculture plays in their lives.

Across the province, there are meaningful ways for people to contribute and help bring agriculture to life for the next generation.



SHARE YOUR TIME, TALENT, OR TREASURE!



Time

- Volunteer at events across the province.
- Help assemble program and resource kits.
- Support hands-on learning experiences for students.



Talent

- Host a farm or ranch tour.
- Share your knowledge and expertise in agriculture.
- Provide pro bono support through your business, trade, or professional expertise.

Treasure

- Invest in annual sponsorship opportunities to expand programs and resources across the province.
- Sponsor specific events and key initiatives.
- Donate funds, materials, or equipment.

SHAPING THE WAY FORWARD

As we step into a new chapter, our commitment to students, educators, partners, and the agriculture industry is guided by a new three-year strategic plan. Developed through thoughtful consultation and grounded in strong relationships, this plan reflects both the evolving needs of Saskatchewan classrooms and the opportunities within our industry.

Four Pillars Rooted in Purpose and Growth:



DEEPEN IMPACT

Deepen the quality and impact of agricultural learning experiences for Saskatchewan students and teachers, while maintaining meaningful provincial reach.

What success looks like:

Students deepen their agricultural literacy and curiosity, and educators confidently integrate agriculture into their teaching.



BUILD FINANCIAL RESILIENCE

Strengthen AITC-SK's long-term financial sustainability through diversified, resilient revenue streams that enable consistent, high-impact programming province-wide.

What success looks like:

AITC-SK maintains a balanced, diversified funding base, ensuring long-term organizational stability and impact.

Focused on measurable outcomes and long-term impact, our strategic plan provides a clear roadmap for strengthening agricultural literacy across the province. More than a planning document, it is a commitment to growing a generation that understands, values, and feels connected to agriculture's vital role in their everyday lives and in Saskatchewan's future.

To ensure our efforts deliver impactful results, we are sharpening how we measure success and applying data to inform every stage of our programming. This includes evaluating initiatives to determine where to expand, refine, or thoughtfully conclude programs, while prioritizing investment in high-impact resource development.



CULTIVATE CHAMPIONS

Cultivate champions across agriculture, education, and the community who actively build, support, and advocate for AITC-SK's mission.

What success looks like:

A broad network of educators, industry partners, volunteers, and community leaders actively champion and extend AITC-SK's mission.



EXPAND CAPACITY

Build AITC-SK's internal capacity by empowering a high-performing, connected team and developing right-sized systems and processes that enable efficient, collaborative, and flexible work.

What success looks like:

AITC-SK's team feels supported and connected, enabled by right-sized systems that strengthen efficiency, collaboration, and decision-making.

OUR TEAM



Sara Shymko
Executive Director



Leah Hermanson
Fund Development
Manager



Chandra Gusikoski
Communications
Manager



Paige Pister
Programs
Manager



Deanne Zacharias
Finance
Administrator



Lindsey Rudd
Sustainability
Program Coordinator



Mary Sidloski
Sustainability
Program Coordinator



Greg Torwalt
School Garden
Program Coordinator



Anna MacDonald
Program Coordinator



Jordyn Leib-Minto
Program and
Communications
Coordinator



Grace Christensen
Program Assistant



Rachel Andres
Resource Administrator



Katrina Finke
Executive Assistant



Will Brooks
National Program
Director, Little Green
Thumbs



Cassidy Lamb
Logistics Coordinator,
Little Green Thumbs

Summer Students:

Emily Karpan
Kiersten Nienhuis
Katherine Andree
Taylor Wakelin

OUR BOARD



Dean Elliott
Chairperson



Ashton Wilson
Treasurer



Sarah Heppner
Vice-Chair



Brendon Fornwald



Byron Eberle



Jessica Lovich



Jessica Podhordeski



Karly Rushinko
(on leave)



Robyn Henry



Tracy Broughton



Claire Ledingham

Agriculture 
in the Classroom
Connecting Kids and Agriculture



2025 BFF Mixer

OUR SPONSORS

SUPERHERO (\$50,000+)



Sustainable Canadian Agricultural Partnership



Saskatchewan



Canada



Community Initiatives Fund
Connect • Engage • Thrive



BMO



Nutrien™



SASK OILSEEDS



SASKATCHEWAN pulse Growers



Sask Wheat DEVELOPMENT COMMISSION

LEADER (\$25,000+)



Affinity Credit Union



Chicken Farmers of Saskatchewan



Cornerstone CREDIT UNION



JGL Partners in agriculture.



Mosaic®



SaskBarley DEVELOPMENT COMMISSION



SaskOats DEVELOPMENT COMMISSION



Sask milk



SASKATCHEWAN RURAL MUNICIPALITIES



SCA SASKATCHEWAN CATTLE ASSOCIATION



UFA Agricultural Community Foundation

HERO (\$15,000+)



BAYER



G. Murray & Edna Forbes Foundation Fund
HELD BY THE SOUTH SASK COMMUNITY FOUNDATION



K+S youth+us



KOCH AGRONOMIC SERVICES



NSERC CRSNG



novonesis



Simplot. GROWER SOLUTIONS



TELUS TELUS Friendly Future Foundation

CHAMPION (\$10,000+)



Bob's Red Mill



BUNGE



CN



Cargill®



get cracking. Saskatchewan Egg Producers



MUNICIPAL HAIL INSURANCE



RICHARDSON



SaskPork



SCIC SASKATCHEWAN CROP INSURANCE CORPORATION



TD TD Friends of the Environment Foundation

PARTNER (\$5,000+)



CO-OP



DISCOVERY FARM Home of Ag in Motion



GRAIN MILLERS



GB



SASK MUSTARD SASKATCHEWAN MUSTARD DEVELOPMENT COMMISSION



SEED MASTER

Builder Sponsors (\$1,500+)

A Horizon Ag Research Ltd.
AcuFast
AGI (Ag Growth International)
BASF Agricultural Specialties
Bourgault Industries
CLAAS of America Inc.
CORR Grain Systems Inc.
Croptimistic Tech – SWAT Maps
Farm Credit Canada
MNP LLP
Palliser Direct
RM of Cut Knife No. 439
RM of Hoodoo No. 401
RM of Lumsden No. 189
RM of Prairiedale No. 321
RM of Webb No. 138
Saskatchewan Institute of
Agrologists
SaskTel Cares
South Country Equipment
Turkey Farmers of SK
UPL

Promoter Sponsors (\$500+)

FMC of Canada Limited
Hammond Realty
RM of Abernethy No. 186
RM of Big Stick No. 141
RM of Biggar no. 347
RM of Birch Hills No. 460

RM of Blucher No. 343
RM of Canwood No. 494
RM of Carmichael No. 109
RM of Churchbridge No. 211
RM of Enterprise No. 142
RM of Excelsior No. 166
RM of Fertile Belt No. 183
RM of Golden West No. 95
RM of Grandview No. 349
RM of Hart Butte No. 11
RM of Hazel Dell No. 335
RM of Hillsdale No. 440
RM of Humboldt No. 370
RM of Kellross No. 247
RM of Kindersley No. 290
RM of Lacadena No. 228
RM of the Lake of the Rivers No.
72
RM of Leroy No. 339
RM of Lomond No. 37
RM of Mariposa No. 350
RM of Mervin No. 499
RM of Milton No. 292
RM of Moose Jaw No. 161
RM of Perdue No. 346
RM of Reciprocity No. 32
RM of Rocanville No. 151
RM of Rodgers No. 133
RM of Rosthern No. 403
RM of Round Valley No. 410
RM of Sasman No. 336

RM of Spy Hill No. 152
RM of St. Andrews No. 287
RM of Sutton No. 103
RM of Tecumseh No. 65
RM of Terrell No. 101
RM of Tullymet No. 216
RM of Osborne No. 310
RM of Wawken No. 93
RM of Wellington No. 97
RM of White Valley No. 49
RM of Winslow No. 319
RM of Wolseley No. 155
Saskatchewan Sheep
Development Board
Saskatoon Co-op

Friend Sponsors (<\$500)

RM of Antelope Park No. 322
RM of Arlington No. 79
RM of Cana No. 214
RM of Canaan No. 255
RM of Clinworth No. 230
RM of Craik No. 222
RM of Deer Forks No. 232
RM of Elcapo No. 154
RM of Eye Hill No. 382
RM of Fox Valley No. 171
RM of Garden River No. 490
RM of Gull Lake No. 139
RM of Happyland No. 231
RM of Hazelwood No. 94

RM of Insinger No. 275
RM of Ituna Bon Accord No. 246
RM of Kelvington No. 366
RM of Keys No. 303
RM of Kingsley No. 124
RM of Lac Pelletier No. 107
RM of Laurier No. 38
RM of Loon Lake No. 561
RM of Manitou Lake No. 442
RM of Mary Field No. 91
RM of Medstead No. 497
RM of Meeting Lake No. 466
RM of Milden No. 286
RM of Monet No. 257
RM of North Battleford No. 437
RM of Oakdale No. 320
RM of Preeceville No. 334
RM of Progress No. 351
RM of Rosedale No. 283
RM of Round Valley No. 410
RM of Saltcoats No. 213
RM of Silverwood No. 123
RM of St. Peter No. 369
RM of Stonehenge No. 73
RM of Touchwood No. 248
RM of Viscount No. 341
RM of Wolverine No. 340
Vale Industries Ltd.

THANK YOU TO OUR SUPPORTERS

We are grateful to everyone who has supported AITC-SK. In 2025, our third annual Acres for Education campaign raised over \$42,500, with an additional \$25,000 matched by JGL. To our committed donors—thank you. Your generosity brings agricultural education to life. Below are two inspiring donation stories that highlight the impact you make.



Sarah Leguee

What began as a simple annual calendar featuring photos captured by Sarah Leguee on her farm has grown into

a meaningful, community-supported initiative. In 2025, the calendar raised \$2,100, with proceeds supporting AITC-SK and helping bring agriculture education to students across the province.



Blue Collar Bull Sale

The Blue Collar Bull Sale brings together community support through a fundraising initiative focused on youth and agriculture.

In 2025, AITC-SK was selected as a recipient, receiving \$4,705. The funds help students experience agriculture first-hand and better understand where their food comes from in Saskatchewan.

OUR SCHOOLS

ABBEY Abbey Hutterian School	Central Butte School	GLADMAR Gladmar Regional School	LAFLECHE Lafleche Central School	Collegiate
ABERDEEN Aberdeen Composite School	CHAPLIN Chaplin School	GRAVELBOURG École Gravelbourg School	LAKE LENORE Lake Lenore School	Reynolds Central School
AHTAHKAKOOP FIRST NATION Chief Ahtahkakoop School	CHOICELAND William Mason School	GRAYSON Grayson School	LAMPMAN Lampman School	MELVILLE Davison School
ALLAN Allan Composite School	CHRISTOPHER LAKE Christopher Lake Public School	GREEN LAKE St. Pascal School	LANGENBURG Langenburg Central School	École St. Henry's Junior Elementary
ANERIOD Vanguard Colony School	CHURCHBRIDGE Churchbridge Public School	GRENFELL Grenfell Elementary Community School	LANGHAM Langham Elementary School	Melville Comprehensive School
ANNAHEIM Annaheim School	CLAVET Clavet Composite School	GULL LAKE Carmichael Hutterian School	LANIGAN Lanigan Central High School	Miller Elementary School
ARBORFIELD Arborfield School	COLEVILLE Rossville School	HAFFORD Hafford Central School	LASHBURN J.H. Moore Elementary School	Silver Stream School
ARCHERWILL Archerwill School	CONSUL Consul School	HAGUE Hague Elementary School	LEADER Estuary Hutterian School	St. Henry's Senior School
ARCOLA Arcola School	CORONACH Coronach School	HAGUE HIGH SCHOOL Hague High School	LEASK Leask Community School	MIDALE Midale Central School
ASQUITH Lord Asquith School	COTE FIRST NATION Chief Gabriel Cote Education Complex	HANLEY Hanley Composite School	LEMBERG North Valley High School	MIDDLE LAKE Three Lakes School
ASSINIBOIA Assiniboia Composite High School	COWESSESS FIRST NATION Cowessess Community Education Centre	HARRIS Harris-Tessier Central School	LEROY Leroy School	MILESTONE Milestone School
ASSINIBOIA ELEMENTARY SCHOOL Rose Valley Colony School	CRAIK Craik School	HAZLET Hazlet School	LESTOCK New Horizon Hutterian School	MISTAWASIS FIRST NATION Mistawasis Nehiyawak High School
AVONLEA Avonlea School	CREIGHTON Creighton Community School	HEPBURN Hepburn School	LIPTON Lipton School	MONTMARTRE Montmartre School
BALCARRES Balcarres Community School	CUDWORTH Cudworth School	HERBERT Herbert School	LLOYDMINSTER Bishop Lloyd Middle School	MONTREAL LAKE FIRST NATION Senator Allan Bird Memorial School
BALGONIE Balgonie Elementary School	CUMBERLAND HOUSE Ministik Community School	HILLMOND Hillmond Central School	COLLEGE PARK SCHOOL École St. Thomas Elementary	MOOSE JAW Albert E. Peacock Collegiate
BATTLEFORD Battleford Central School	CUT KNIFE Cut Knife High School	HODGEVILLE Norfolk/Hodgeville Hutterian School	EMPIRE SCHOOL King George School	Central Collegiate
ST. VITAL CATHOLIC SCHOOL	DALMENY Prairie View School	HOLDFAST Schell School	LINDALE SCHOOL Our Lady of Hope School	Coteau Hills Elementary School
BEECHY Beechy School	D'ARCY STATION D'Arcy School	HUDSON BAY Hudson Bay Community School	ÉCOLE ST. THOMAS Father Gorman Community School	École St. Margaret School
BELLEGARDE École De Bellegarde	DAVIDSON Davidson School	HUMBOLDT Humboldt Collegiate Institute	ÉRNE STUDER SCHOOL Ernie Studer School	Empire School
BETHUNE Clive Draycott School	DELISLE Delisle Composite School	HUMBOLDT PUBLIC SCHOOL St. Augustine School - Humboldt	ST. MARY'S ELEMENTARY SCHOOL Winston Churchill School	King George School
BIENFAIT Weldon School	DINSMORE Dinsmore Composite School	IMPERIAL Imperial School	LOON LAKE Ernie Studer School	Lindale School
BIG RIVER Big River Public High School	DRAKE Drake School	INDIAN HEAD Indian Head Elementary School	LOREBURN Loreburn Central School	Our Lady of Hope School
BIGGAR Big Rose Colony School	DUCK LAKE Stobart Community School	INDIAN HEAD HIGH SCHOOL	LUMSDEN Arm River Colony School	Riverview Collegiate High School
BIRCH HILLS Birch Hills Public School	DUNDURN Dundurn School	INVERMAY Invermay School	ÉCOLE LUMSDEN ELEMENTARY SCHOOL	Sacred Heart School
BJORKDALE Bjorkdale School	EASTEND Eastend School	ITUNA Ituna School	LOREBURN CENTRAL SCHOOL	St. Agnes School
BLACK LAKE Father Porte Memorial	EATONIA Eaton School	KAHKEWISTAHAW FIRST NATION	ARM RIVER COLONY SCHOOL	St. Mary School
DENESULINE SCHOOL	H. HARDCASTLE SCHOOL	CHIEF KAHKEWISTAHAW COMMUNITY SCHOOL	ÉCOLE LUMSDEN ELEMENTARY SCHOOL	St. Michael School
BLAINE LAKE Blaine Lake Composite School	EDENWOLD Edenwold School	KAMSACK Bearstream School	MACOUN Macoun School	Sunningdale School
BORDEN Borden Little Sprouts	ELROSE Elrose Composite School	KAMSAK COMPREHENSIVE INSTITUTE	MAIDSTONE Maidstone High School	Vanier Collegiate
BROADVIEW Broadview School	ENGLEFELD Englefeld School	VICTORIA SCHOOL	RATUSHNIAK ELEMENTARY SCHOOL	William Grayson School
BRUNO Bruno Central School	ESTERHAZY Esterhazy Christian Academy	KELLIHER Kelliher School	MANOR Manor School	Winston Churchill School
BRUNO CHILD CARE CENTRE	ESTEVAN Hillcrest Early Learning Centre	KELVINGTON Kelvington School	MAPLE CREEK Box Elder Hutterian School	MOOSOMIN Macleod Elementary School
BUFFALO NARROWS Twin Lakes Community School	EDENWOLD SCHOOL	ROBERT MELROSE ELEMENTARY SCHOOL	MAPLE CREEK COMPOSITE SCHOOL	Mnoughton High School
BULYEA Bulyea Elementary School	ELROSE COMPOSITE SCHOOL	KENASTON Clear Springs Colony School	MARENGO Westcliffe Composite School	MORTLACH Mortlach School
BURSTALL Burstall School	ENGLEFELD SCHOOL	KENASTON SCHOOL	MARSHALL Marshall School	MOSSBANK Mossbank School
CABRI Cabri School	ESTERHAZY HIGH SCHOOL	SASKATCHEWAN DISTANCE LEARNING CENTRE - MOOSE JAW CAMPUS	MARTENSVILLE École Holy Mary Catholic School	MUENSTER Muenster School
CANORA Canora Composite School	P.J. GILLEN SCHOOL	KENNEDY Kennedy Langbank School	MANOR SCHOOL	MUSKODAY FIRST NATION Muskoday First Nation Community School
CANORA JUNIOR ELEMENTARY SCHOOL	ESTEVAN LEARNING CENTRE - ESTEVAN CAMPUS	KINCAID Kincaid Central School	MAPLE CREEK COMPOSITE SCHOOL	MUSKOWEKWAN FIRST NATION
CARIEVALE Carievale School	SPRUCE RIDGE SCHOOL	KINDERSLEY Elizabeth Middle School	MARENGO WESTCLIFFE COMPOSITE SCHOOL	Muskowekwan School
CARLYLE Gordon F. Kells High School	ST. MARY'S SCHOOL	KINDERSLEY COMPOSITE SCHOOL	MARSHALL HIGH SCHOOL	NAICAM Naicam School
CARNDUFF Carnduff Education Complex	WESTVIEW ELEMENTARY SCHOOL	SPRINGFIELD COLONY SCHOOL	RATUSHNIAK ELEMENTARY SCHOOL	NAICAM SCHOOL
CARONPORT Briercrest Christian Academy	ESTON Eston Composite School	WESTBERRY ELEMENTARY SCHOOL	MANOR SCHOOL	NEILBURG Neilburg Composite School
CARONPORT ELEMENTARY SCHOOL	FILLMORE 33 Central	KINISTINO Kinistino Public School	MAPLE CREEK COMPOSITE SCHOOL	NEUDORF North Valley Elementary School
CARROT RIVER Carrot River Valley School	FLYING DUST FIRST NATION Kopawahakenum	KIPLING Kipling School	MAPLE CREEK COMPOSITE SCHOOL	NIPAWIN Central Park Elementary School
CARRY THE KETTLE FIRST NATION	FOAM LAKE Foam Lake Composite High School	KISBEY Little People's Learning Lodge	MARENGO WESTCLIFFE COMPOSITE SCHOOL	L.P. Miller Comprehensive School
NAKODA OYADE EDUCATION CENTRE	FORT QU'APPELLE Bert Fox Community High School	KYLE Kyle Composite School	MARSHALL SCHOOL	Wagner Elementary School
CASA RIO South Corman Park School	FORT QU'APPELLE ELEMENTARY SCHOOL	MATADOR COLONY SCHOOL	MARTENSVILLE École Holy Mary Catholic School	NOKOMIS Nokomis School
CENTRAL BUTTE	FOX VALLEY Fox Valley School	LA RONGE Gordon Denny Community School	MAPLE CREEK COMPOSITE SCHOOL	NORQUAY Norquay School
	FRONTIER Frontier School	PRE-CAM COMMUNITY SCHOOL	MAPLE CREEK COMPOSITE SCHOOL	NORTH BATTLEFORD Bready Elementary School
			MARENGO WESTCLIFFE COMPOSITE SCHOOL	École Monseigneur Blaise Morand
			MARSHALL Marshall School	École Père Mercure
			MARTENSVILLE École Holy Mary Catholic School	Holy Family School
			LAKE VISTA PUBLIC SCHOOL	John Paul II Collegiate
			MARTENSVILLE HIGH SCHOOL	Notre Dame School
			VALLEY MANOR ELEMENTARY SCHOOL	Sakewew High School
			VENTURE HEIGHTS ELEMENTARY SCHOOL	North Battleford
			MAYMONT Maymont Central School	St. Mary School
			MCCLEAN McLean School	OCEAN MAN FIRST NATION Oceanman Education Center
			MEADOW LAKE Gateway Middle School	OCHAPOWACE FIRST NATION Kakisiwew school
			JONAS SAMSON MIDDLE SCHOOL	OSLER Osler School
			JUBILEE ELEMENTARY	Valley Christian Academy
			MEATH PARK Meath Park Public School	OUNGRE Lyndale School
			MEDSTEAD Medstead Central School	OUTLOOK Outlook Elementary School
			MELFORT Brunswick Elementary	Outlook High School
			MAUDE BURKE ELEMENTARY SCHOOL	OXBOW
			MELFORT & UNIT COMPREHENSIVE	

Oxbow Prairie Horizons School
PANGMAN
Pangman School
PARADISE HILL
Paradise Hill School
PASQUA FIRST NATION
Chief Paskwa Education Centre
PASQUA MUSCOWPETUNG
FIRST NATION
Muscowpetung School
PEEPEEKISIS FIRST NATION
Peepeekisis Pesakastew School
PENSE
Pense School
PIAPOT FIRST NATION
Payepot School
PIERCELAND
Chief Napew Memorial
Pierceland Central School
PILOT BUTTE
Pilot Butte School
PINEHOUSE LAKE
Minahik Waskahigan
Elementary School
Minahik Waskahigan High
School
PLENTY
North West Central School
PONTEIX
École Boréale
Hulbert/Ponteix Hutterian
School
Ponteix School
PREECEVILLE
Preeceville School
PRINCE ALBERT
Carlton Comprehensive Public
High School
East Central Public School
École Arthur Pechey Public
School
École Holy Cross School
École St. Anne
École St. Mary High School
École Valois
École Vickers Public School
Elevation Academy
John Diefenbaker Public
School
King George Public School
Osborne Public School
Prince Albert Collegiate
Institute
Princess Margaret Public
School
Queen Mary Public School
Red Wing Public School
Riverside Public School
Saskatoon Rivers Public School
Division
Spruce Home Public School
St. Catherine Catholic School
St. Francis School
St. John Community School
St. Michael School
Vincent Massey Public School
Wesmor Public High School
West Central School Public
School
PUNNICHY
George Gordon Education
Center
Punnichy Elementary
Community School
Punnichy Community High
School
QU'APPELLE
James Hamblin School
QUILL LAKE
Lakeside Colony School
Quill Lake School
RADVILLE
Radville Regional High School
St. Olivier School
RAPID VIEW
Green Acre Elementary School
RAYMORE
Raymore School
REDVERS
Redvers School
REGINA
Albert School
Allan Blakeney Adult Campus
Archbishop M.C. O'Neill High
School
Arcola School
Argyle School
Balfour Collegiate
Campbell Collegiate
Centennial School
Cornwall Alternative School

Coronation Park School
Curtis-Horne Christian School
Deshaye Catholic School
Douglas Park School
Dr. A.E. Perry School
Dr. George Ferguson School
Dr. L.M. Hanna School
Dr. Martin Leboldus High School
Du Parc École Francophone
École Connaught Community
School
École Harbour Landing School
École Monseigneur De Laval
École St. Angela Merici
École St. Elizabeth
École St. Mary
École St. Pius X
École W.S. Hawrylak Elementary
School
École Wascana Plains School
Elsie Mironuck School
Ethel Milliken School
F.W. Johnson Collegiate
George Lee School
Gladys McDonald School
Glen Elm School
Grant Road School
Harvest City Christian
Academy
Henry Braun School
Henry Janzen School
Imperial Community School
Jack Mackenzie School
Judge Bryant School
Kitchener School
Lakeview School
M.J. Coldwell School
Marion Mcveety School
Martin Collegiate
Massey School
Mcdermid Community School
Mclurg School
Michael A. Riffel High School
Miller Comprehensive High
School
Montessori School Of Regina
Plainsview School
Prairie Sky School
Ranch Ehrlo
Regina Christian School
Regina Christian School- Early
Years Campus
Regina Huda School
Rosemont School
Ruth M. Buck School
Ruth Pawson School
Sacred Heart Community
School
Saskpolytech - Educators
Seven Stones Community
School
Sheldon-Williams Collegiate
St. Augustine Community
School
St. Bernadette School
St. Catherine Community
School
St. Dominic Savio Elementary
St. Francis Community School
St. Gabriel School
St. Gregory School
St. Jerome School
St. Joan of Arc School
St. Josaphat School
St. Kateri Tekakwitha School
St. Marguerite Bourgeoys
School
St. Matthew School
St. Nicholas School
St. Raphael (West Location)
St. Theresa School
St. Timothy School
Tawāw School
The Crescents Elementary
School
Thom Collegiate
Thomson School
W.F. Ready School
W.H. Ford School
W.S. Hawrylak School
Walker School
Wilfrid Hunt School
Wilfrid Walker School
WILFRA BEACH
South Shore School
ROCANVILLE
Rocanville School
ROSE VALLEY
Rose Valley School
ROSETOWN
Cleland Colony School

McGee Colony School
Prairieland School Sovereign
Colony
Rosetown Central High School
Walter Asettline School
ROSTERN
Rosthern Community School
ROULEAU
Rouleau School
SALTCOATS
Saltcoats School
SANDY BAY
Hector Thiboutot Community
School
SASKATOON
Aden Bowman Collegiate
AITC
Allegro Montessori School
Bedford Road Collegiate
Bethlehem Catholic High
School
Bishop Filevich Ukrainian
Bilingual School
Bishop Klein Community
School
Bishop Murray High School
- Fsp
Bishop Roborecki Community
School
Brevoort Park School
Brownell School
Brunskill School
Buena Vista School
Caroline Robins Community
School
Caswell Community School
Centennial Collegiate
Chief Whitecap School
City Park School
Colette Bourgonje School
Dr. John G. Egnatoff School
École College Park School
E.D. Feehan Catholic High
School
École Canadienne-Française
École Henry Kelsey School
École Alvin Buckwold School
École Cardinal Leger School
École Father Robinson School
École Silverspring School
École St. Gerard School
École St. Luke School
École St. Matthew School
École St. Paul School
École St. Peter School
École Victoria School
École Lakeview School
École River Heights School
École Dundonald School
École Forest Grove School
Ellen Gunn School
Ernest Lindner School
Fairhaven School
Father Vachon School
Flex Ed School
Georges Vanier Catholic Fine
Arts School
Greystone Heights School
Holliston School
Holy Family Catholic School
Howard Coad School
Hugh Cairns V.C. School
James L. Alexander School
John Lake School
King George Community
School
Lakeridge School
Lawson Heights School
Lester B. Pearson School
Marion M. Graham Collegiate
Montgomery School
Mount Royal Collegiate
North Park Wilson School
Oskayak High School
Pike Lake School
Pope John Paul II School
Prince Phillip School
Riverside Christian School
Roland Michener School
Saskatoon Catholic Cyber
School
Saskatoon Christian School
Saskatoon French School
Saskatoon Misbah School Inc.
Silverwood Heights School
St. Angela School
St. Anne School
St. Bernard School
St. Dominic School
St. Edward School
St. Frances School

St. George School
St. John's Community School
St. Joseph High School
St. Kateri Tekakwitha Catholic
School
St. Lorenzo Ruiz Catholic School
St. Marguerite School
St. Maria Goretti School
St. Mark School
St. Mary's Wellness And
Education Centre
St. Michael School
St. Nicholas Catholic School
St. Philip School
St. Thérèse Of Lisieux Catholic
School
Sutherland Community School
Sylvia Fedoruk School
Tommy Douglas Collegiate
University of Saskatchewan
Vincent Massey Community
School
W.P. Bate Community School
wähkōhtowin Community
School
Westmount Community School
Wildwood School
Willowgrove School
SEDLEY
Sedley School
SEMANS
Sask Central Hutterian School
SHAUNAVON
Shaunavon Public School
SHELLBROOK
Shellbrook Elementary Public
School
St. P. Sandin Public High School
SMILEY
Smiley Colony School
SOURIS VALLEY NO. 7
Souris Valley Daycare
SOUTHEND
Reindeer Lake
SOUTHEY
Robert Southey School
SPIRITWOOD
Hartley Clark Elementary
School
Rivier Elementary School
Spiritwood High School
ST ISIDORE DE BELLEVUE
École St-Isidore De Bellevue
ST WALBURG
St. Walburg School
ST. BRIEUX
St. Brieux School
STANDING BUFFALO FIRST
NATION
Standing Buffalo Tatanka Najin
School
STAR CITY
Star City Colony School
Star City School
STOCKHOLM
Macdonald School
STOUGHTON
Stoughton Central School
STRASBOURG
William Derby School
STURGEON LAKE
Sturgeon Lake Central School
Sturgis
Sturgis Composite School
SUCCESS
Success School
SWIFT CURRENT
All Saints Catholic School
Capeland/Main Centre
Hutterian School
Central School
École Centennial School
Fairview School
McMahon Hutterian School
O.M. Irwin School
Ruskin/SC Hutterian School
Sage Creek Prairie School
Swift Current Child Care Centre
Swift Current Comprehensive
High School
THEODORE
St. Theodore School
TISDALE
Tisdale Elementary School
Tisdale Middle & Secondary
School
TOMPKINS
Tompkins School
UNITY
Unity Public School
VANGUARD

Vanguard Community School
VANSCOY
Vanscoy School
VIBANK
Vibank Regional School
VISCOUNT
Viscount Central School
VONDA
École Providence
WADENA
Wadena Composite School
Wadena Elementary School
WAKAW
Wakaw School
WALDECK
Friesen/Waldeck Hutterian
School
Waldeck Elementary And
Junior High School
WALDHEIM
Riverbend Colony School
Waldheim School
WALSH
Spring Creek Hutterian School
WAPELLA
Wapella School
WARMAN
École Warman Elementary
School
Holy Trinity Catholic School
Spirit E-Learning School
Sunnydale Colony School
Traditions Elementary School
Warman Community Middle
School
Warman High School
WATROUS
Watrous Elementary School
Winston High School
WATSON
Watson School
WAWOTA
Wawota Parkland School
WEBB
Webb Hutterian School
WEYBURN
Assiniboia Park Elementary
School
Legacy Park Elementary School
Little Discoveries Early Learning
Cooperative
Souris School
St. Michael School
Weyburn Comprehensive
School
WHITE CITY
École White City School
Emerald Ridge Elementary
School
Lajord Colony School
WHITE FOX
White Fox School
WHITEWOOD
Whitewood School
WILCOX
St. Augustine School
WILKIE
Mclurg High School
Newmark Colony School
Norman Carter Elementary
School
WOLSELEY
Dr. Isman Elementary School
Wolseley High School
WYMARK
Wymark School
WYNYARD
Wynyard Composite High
School
Wynyard Elementary School
YELLOW GRASS
Yellow Grass School
YELLOW QUILL FIRST NATION
Nawigizigweyas Education
Centre
YORKTON
Columbia Elementary
Dr. Brass School
M.C. Knoll School
Sacred Heart High School
St. Alphonsus School
St. Mary's School
St. Michael's School
St. Paul's School
Yorkdale Central School
Yorkton Regional High School
ZENON PARK
École Notre-Dame-Des-Vertus

STUDENT REFLECTIONS



My name is: Cohen Grade: 4

This is what I learned about agriculture:

It is cool how you use technology to help map out the fields. I like how you make hummus from chickpeas. It was so good. yum.

Thank you so much! 😊



My name is: Zenga Grade: ¹⁵5

This is what I learned about agriculture: I learned that animals don't like quick movements. They get scared easily. They also don't like you imitating their sound. It takes a chicken one day to produce an egg. All different kinds of eggs, it depends on the chickens colour and their diet. Cows have four stomachs. Pigs can nibble but not bite.



My name is: Leyna Grade: 4

This is what I learned about agriculture:

I learned a lot about agriculture. I learned what's good for crops and what's bad for crops. I also learned a lot about machinery. I liked all of it.

Agriculture in the Classroom

Financial Statements

December 31, 2025



McClelland Debusschere

Chartered Professional Accountants
Assurance Tax Advisory

Independent Auditors' Report

To the Board of Directors
Agriculture in the Classroom Sask. Inc.

Opinion

We have audited the financial statements of Agriculture in the Classroom Sask. Inc., which comprise the statement of financial position as at December 31, 2025 and the statements of operations, statement of net assets and cash flows for the year then ended, and notes to the financial statements, including a summary of significant accounting policies.

In our opinion, the accompanying financial statements present fairly, in all material respects, the financial position of Agriculture in the Classroom Sask. Inc. as at December 31, 2025, and the results of its operations and its cash flows for the year then ended in accordance with Canadian accounting standards for not-for-profit organizations.

Basis for Opinion

We conducted our audit in accordance with Canadian generally accepted auditing standards. Our responsibilities under those standards are further described in the Auditor's Responsibilities for the Audit of the Financial Statements section of our report. We are independent of the organization in accordance with the ethical requirements that are relevant to our audit of the financial statements in Canada, and we have fulfilled our other ethical responsibilities in accordance with these requirements. We believe that the audit evidence we have obtained is sufficient and appropriate to provide a basis for our opinion.

Other Information

Management is responsible for the other information. The other information comprises the information included in the annual report, but does not include the financial statements and our auditor's report thereon.

Our opinion on the financial statements does not cover the other information and we do not express any form of assurance conclusion thereon.

In connection with our audit of the financial statements, our responsibility is to read the other information and, in doing so, consider whether the other information is materially inconsistent with the financial statements or our knowledge obtained in the audit or otherwise appears to be materially misstated.

The 2025 annual report has not been issued as of the date of this letter and is expected to be made available to us after the date of our auditor's report. If, based on the work we have performed, we conclude that there is a material misstatement of this other information, we are required to report that fact to those charged with governance.



McClelland Debusschere

Chartered Professional Accountants
Assurance Tax Advisory

Independent Auditors' Report

Responsibilities of Management and Those Charged with Governance for the Financial Statements

Management is responsible for the preparation and fair presentation of these financial statements in accordance with Canadian accounting standards for not-for-profit organizations, and for such internal control as management determines is necessary to enable the preparation of financial statements that are free from material misstatement, whether due to fraud or error.

In preparing these financial statements, management is responsible for assessing the organization's ability to continue as a going concern, disclosing, as applicable, matters related to a going concern and using the going concern basis of accounting unless management either intends to liquidate the organization or to cease operations, or has no realistic alternative to do so.

Those charged with governance are responsible for overseeing the organization's financial reporting process.

Auditor's Responsibilities for the Audit of the Financial Statements

Our objectives are to obtain reasonable assurance about whether the financial statements as a whole are free from material misstatement, whether due to fraud or error, and to issue an auditor's report that includes our opinion. Reasonable assurance is a high level of assurance, but is not a guarantee that an audit conducted in accordance with Canadian generally accepted auditing standards will always detect a material misstatement when it exists. Misstatements can arise from fraud or error and are considered material if, individually or in the aggregate, they could reasonably be expected to influence the economic decisions of users taken on the basis of these financial statements.

As part of an audit in accordance with Canadian generally accepted auditing standards, we exercise professional judgment and maintain professional skepticism throughout the audit. We also:

- Identify and assess the risks of material misstatement of the financial statements, whether due to fraud or error, design and perform audit procedures responsive to those risks, and obtain audit evidence that is sufficient and appropriate to provide a basis for our opinion. The risk of not detecting a material misstatement resulting from fraud is higher than for one resulting from error, as fraud may involve collusion, forgery, intentional omissions, misrepresentations, or the override of internal control.
- Obtain an understanding of internal control relevant to the audit in order to design audit procedures that are appropriate in the circumstances, but not for the purpose of expressing an opinion on the effectiveness of the organization's internal control.
- Evaluate the appropriateness of accounting policies used and the reasonableness of accounting estimates and related disclosures made by management.



McClelland Debusschere

Chartered Professional Accountants
Assurance Tax Advisory

Independent Auditors' Report

- Conclude on the appropriateness of management's use of the going concern basis of accounting and, based on the audit evidence obtained, whether a material uncertainty exists related to events or conditions that may cast significant doubt on the organization's ability to continue as a going concern. If we conclude that a material uncertainty exists, we are required to draw attention in our auditor's report to the related disclosures in the financial statements or, if such disclosures are inadequate, to modify our opinion. Our conclusions are based on the audit evidence obtained up to the date of our auditor's report. However, future events or conditions may cause the organization to cease to continue as a going concern.
- Evaluate the overall presentation, structure and content of the financial statements, including the disclosures, and whether the financial statements represent the underlying transactions and events in a manner that achieves fair presentation.

We communicate with those charged with governance regarding, among other matters, the planned scope and timing of the audit and significant audit findings, including any significant deficiencies in internal control that we identify during our audit.

McCLELLAND DEBUSSCHERE
CPA PC INC

Chartered Professional Accountants

Saskatoon, SK
March 16, 2026

Agriculture in the Classroom Sask. Inc.

Statement of Financial Position

December 31, 2025

	<u>2025</u>	<u>2024</u>
Assets		
Current Assets		
Cash	\$ 116,197	\$ 112,279
Investments (Note 2)	890,646	954,749
Accounts receivable (Note 3)	364,450	224,391
Inventory	31,134	38,795
Prepaid	12,231	7,430
	<u>1,414,658</u>	<u>1,337,644</u>
Tangible capital assets (Note 4)	<u>69,679</u>	<u>9,309</u>
	<u>\$ 1,484,337</u>	<u>\$ 1,346,953</u>
Liabilities and Net Assets		
Current Liabilities		
Accounts payable (Note 5)	\$ 103,856	\$ 164,715
Deferred revenue (Note 6)	143,293	57,689
	<u>247,149</u>	<u>222,404</u>
Net Assets		
Internally restricted net assets	950,000	944,574
Unrestricted net assets	287,188	179,975
	<u>1,237,188</u>	<u>1,124,549</u>
	<u>\$ 1,484,337</u>	<u>\$ 1,346,953</u>
Commitments (Note 7)		

Approved on Behalf of the Board:

Arthur Mac

Dean Elliott

The accompanying notes are an integral part of these financial statements.

Agriculture in the Classroom Sask. Inc.

Statement of Operations

For the Year Ended December 31, 2025

	2025	2024
Revenue		
Sponsorships	\$ 602,100	\$ 595,375
Grants	367,409	354,870
Project revenue	289,806	214,527
Sales	208,370	120,599
Little green thumbs national	182,923	175,500
School garden program	182,625	201,350
Other	83,961	95,452
Donations	62,707	43,753
Donations in-kind	53,000	53,000
Canadian agriculture literacy month	32,874	40,732
Resource library	22,300	2,000
Membership	5,300	5,900
	2,093,375	1,903,058
Expenses		
Program costs	442,675	407,030
Project expenses	313,677	287,557
Wages and benefits (Note 8)	313,634	341,021
Cost of sales	192,494	122,513
Little green thumb	182,921	184,159
School garden program	178,223	201,348
Administration	156,239	159,933
Resource library	131,408	107,369
Communication costs	50,559	66,366
Canadian agriculture literacy month	34,571	40,733
Staff expenses	25,593	26,260
Board	12,646	8,868
AITC Canada	771	7,233
Bad debts	-	2,654
	2,035,411	1,963,044
Excess (deficiency) of revenue over expenses from operations	57,964	(59,986)
Other Income		
Investment income (Note 9)	66,654	118,422
Investment management fee	(11,979)	(11,845)
Excess of revenue over expenses	\$ 112,639	\$ 46,591

The accompanying notes are an integral part of these financial statements.

Agriculture in the Classroom Sask. Inc.

Statement of Net Assets

For the Year Ended December 31, 2025

	Unrestricted Net Assets	Internally Restricted Net Assets	2025	2024
Net Assets - beginning of year	\$ 179,975	\$ 944,574	\$ 1,124,549	\$ 1,077,958
Excess of revenue over expenses	112,639	-	112,639	46,591
Fund transfer	(5,426)	5,426	-	-
Net assets - end of year	\$ 287,188	\$ 950,000	\$ 1,237,188	\$ 1,124,549

The accompanying notes are an integral part of these financial statements.

Agriculture in the Classroom Sask. Inc.

Statement of Cash Flows

For the Year Ended December 31, 2025

	<u>2025</u>	<u>2024</u>
CASH FLOWS FROM OPERATING ACTIVITIES:		
Excess of revenue over expenses	\$ 112,639	\$ 46,591
Non-cash items:		
Amortization	12,172	4,674
Change in working capital items:		
Change in accounts receivables	(140,060)	126,576
Change in inventories	7,661	(19,208)
Change in prepaid	(4,801)	1,451
Change in accounts payable	(60,858)	16,171
Change in deferred revenue	85,604	(149,467)
	<u>12,357</u>	<u>26,788</u>
CASH FLOWS FROM INVESTING ACTIVITIES:		
Change in investments	64,103	(105,108)
Purchase of tangible capital assets	(72,542)	(8,448)
	<u>(8,439)</u>	<u>(113,556)</u>
Net increase (decrease) in cash	3,918	(86,768)
Cash at beginning of period	<u>112,279</u>	<u>199,047</u>
Cash at end of period	\$ 116,197	\$ 112,279

The accompanying notes are an integral part of these financial statements.

Agriculture in the Classroom Sask. Inc.

Notes to the Financial Statements For the Year Ended December 31, 2025

Agriculture in the Classroom Sask. Inc. (the "Organization") was incorporated under *The Non-Profit Corporations Act* in the province of Saskatchewan on June 14, 1994. Effective July 28, 2004, the Organization became a registered charity under the *Income Tax Act* and, as such, is not subject to income tax under the provisions of paragraph 149(1)(l) of the *Income Tax Act*.

The Organization is an industry-sponsored organization designed to educate students, teachers, and the general public about agriculture and the agri-food industry.

1. Significant Accounting Policies

a. Basis of Presentation

These financial statements have been prepared, in accordance with Canadian accounting standards for not-for-profit organizations ("ASNPO") issued by the Accounting Standards Board of CPA Canada and set out in Part III of the CPA Canada Handbook. The Organization has chosen to apply the following accounting policies.

b. Cash

Cash is defined as cash and short-term investments with maturity dates at acquisition of less than 90 days.

c. Inventory

Inventory is recorded at the lower of cost and net realizable value with the cost being determined by the weighted average method.

d. Investments

Investments consist of guaranteed investment certificates, bonds and equities and are accounted for at fair market value.

e. Tangible capital assets

Tangible capital assets are recorded at cost less accumulated amortization. Amortization is provided on the declining balance basis over the estimated useful life of the assets at the following rates:

Computer equipment	55% Declining Balance
Display	20% Declining Balance
Furniture and equipment	20% Declining Balance

In the year of acquisition, amortization is provided at one-half the annual rate.

The accompanying notes are an integral part of these financial statements.

Agriculture in the Classroom Sask. Inc.

Notes to the Financial Statements
For the Year Ended December 31, 2025

1. Significant Accounting Policies (continued)

f. Internally restricted net assets

Internally restricted net assets reports resources designated by the Board to be held to fund future unforeseen expenditures and special projects. The Board has established two internally restricted funds:

- Contingency Fund: The contingency fund's purpose is to manage operational cash flow shortages, address unexpected financial shortfalls or obligations, support the wind-down of the organization if necessary, and to serve as collateral for credit cards, or other such debt facilities.
- Growth Fund: The growth fund's purpose is to develop tools, resources, and initiatives that improve educational programs and operational efficiency to support the long-term impact of Agriculture in the Classroom Sask. Inc.'s educational efforts, fund initiatives that measure and evaluate the long-term impact of Agriculture in the Classroom Sask. Inc.'s educational efforts, and to make capital investments in technology and capital assets that promote organizational growth and sustainability.

g. Revenue recognition

The Organization follows the deferral method of accounting for contributions. Restricted contributions are recognized as revenue in the year in which the related expenses are incurred or the restrictions are met. Unrestricted contributions are recognized as revenue when received or receivable if the amount to be received can be reasonably estimated and collection is reasonably assured.

The Organization recognizes subsidies and grants received from various government programs as revenue in the period earned after all necessary applications have been completed and collection is reasonably assured. If the grant or subsidy arose as a result of incurring certain expenses, the corresponding grant or subsidy revenue will be reported in the same period as the expenses. These amounts may be subject to review by Canada Revenue Agency or other government agencies. Any differences between the amounts recorded in the financial statements and the amounts received will be recognized in income in the period in which new information becomes known.

Sales, sponsorships, membership revenue, project revenue, donations, little green thumbs national, school garden program, Canadian agriculture literacy month, resource library, donations in kind, and other revenue are recognized in the period in which they are earned. Revenue received in advanced are recorded as deferred revenue.

Investment income is comprised of dividends which are recognized in the period in which they are declared, interest which is recognized in the period in which they are earned, realized gains/losses which are recognized in the period in which the sale is realized and unrealized gains/losses which are recognized based on the change in fair market value at the end of the period.

h. Measurement uncertainty

The preparation of financial statements in conformity with ASNPO requires management to make estimates and assumptions that affect the reported amounts of assets and liabilities, disclosure of contingent assets and liabilities at the date of the financial statements and the reported amounts of revenues and expenses during the period. These estimates are periodically reviewed and any adjustments necessary are reported in earnings in the period in which they become known. Actual results could differ from these estimates.

The accompanying notes are an integral part of these financial statements.

Agriculture in the Classroom Sask. Inc.

Notes to the Financial Statements
For the Year Ended December 31, 2025

1. Significant Accounting Policies (continued)

i. Donations in-kind

Donations in-kind are materials and services that would normally be purchased by the Organization and have been recorded as revenue in the financial statements at fair value.

2. Investments

	2025	2024
Guaranteed investment certificate	\$ 228,143	\$ 325,000
USD Equities	201,182	247,857
CAD Equities	167,578	193,602
Fixed income bonds	293,743	188,290
	\$ 890,646	\$ 954,749

The entity has two guaranteed investment certificates with cost of \$75,000 and \$150,000. The GIC's have annual interest rates of 4.19% (fixed) and 2.25% (variable) with maturity dates of March 21, 2026 and October 21, 2026 respectively. USD Equities have been accounted for in Canadian dollars using daily exchange rates.

The investment balances have been internally restricted, held to fund future unforeseen expenditures and special projects.

3. Accounts receivables

	2025	2024
Trade accounts receivable	\$ 355,319	\$ 208,265
Interest receivable	3,231	10,782
GST receivable	5,900	7,998
Allowance for doubtful trade accounts receivable	-	(2,654)
	\$ 364,450	\$ 224,391

The accompanying notes are an integral part of these financial statements.

Agriculture in the Classroom Sask. Inc.

Notes to the Financial Statements
For the Year Ended December 31, 2025

4. Tangible capital assets

	Cost	Accumulated amortization	2025 Net Book Value	2024 Net Book Value
Display	\$ 61,370	\$ (7,195)	\$ 54,175	\$ -
Computer equipment	47,653	(39,236)	8,417	4,241
Furniture and equipment	24,663	(17,576)	7,087	5,068
	<u>\$ 133,686</u>	<u>\$ (64,007)</u>	<u>\$ 69,679</u>	<u>\$ 9,309</u>

The organization had amortization expense of \$12,172 in 2025 (2024 - \$4,674)

5. Accounts payable

	2025	2024
Trade accounts payable	\$ 45,395	\$ 127,969
Wages payable	38,850	27,719
Other employee deductions payable	12,723	1,790
PST Payable	6,888	7,237
	<u>\$ 103,856</u>	<u>\$ 164,715</u>

6. Deferred Revenue

	2025	2024
Other deferred revenue	\$ 84,300	\$ 44,170
LGT Hub	22,955	-
School garden program	15,608	10,780
Project funds administration	14,234	739
Administration	6,196	2,000
	<u>\$ 143,293</u>	<u>\$ 57,689</u>

7. Commitments

The Organization leases premises and equipment under agreements requiring aggregate minimum payments over the next two years as follows:

2026	\$30,891
2027	\$15,190

The accompanying notes are an integral part of these financial statements.

Agriculture in the Classroom Sask. Inc.

Notes to the Financial Statements
For the Year Ended December 31, 2025

8. Allocation of expenses

The organization engages in the delivery of a number of programs to educate students, teachers, and the general public about agriculture and the agri-food industry. The costs of each program include the costs of personnel, supplies and other expenses that are directly related to providing the program. The organization also incurs a number of general support expenses that are common to the administration of the organization and each of its programs.

During the year, \$92,988 of salaries were allocated to Resource Library, and \$374,812 were allocated to Programs.

9. Investment income

	2025	2024
Realized gain on disposal of investment	\$ 44,047	\$ 12,240
Dividends and Interest	18,151	38,027
Unrealized gain on investments	2,686	67,390
Bank interest	1,770	765
	\$ 66,654	\$ 118,422

10. Financial instruments

The Organization, as part of its operations, carries a number of financial instruments. Financial assets include cash, inventory, accounts receivable, and prepaids, which are measured at amortized cost, and investments which are measured at fair market value as presented on the statement of financial position. Financial liabilities include accounts payable and deferred revenue measured at amortized cost as presented on the statement of financial position.

It is management's opinion that the Organization is not exposed to significant market, other price, or currency risks arising from these financial instruments except as otherwise disclosed. The risks of the Organization include:

Credit risk

Credit risk is the risk that one party to a financial instrument will cause a financial loss for the other party by failing to discharge an obligation. The Organization is exposed to credit risk on the accounts receivable from its customers, however, does not have a significant exposure to any individual customer or counterpart. In order to reduce its credit risk, the Organization issues invoices per agreements that have been entered into where collection is reasonably assured.

Interest rate risk

Interest rate risk is the risk that the fair value or future cash flows of a financial instrument will fluctuate because of changes in market interest rates. The Organization's exposure to interest rate risk is limited to the investments and line of credit which are subject to future changes in interest rates.

The accompanying notes are an integral part of these financial statements.

Agriculture in the Classroom Sask. Inc.

Notes to the Financial Statements
For the Year Ended December 31, 2025

10. Financial instruments (continued)

Liquidity risk

Liquidity risk is the risk that an entity will encounter difficulty in meeting obligations associated with financial liabilities. The Organization's exposure to liquidity risk is dependent on the receipt of funds from its operations, external borrowings and other related sources. Funds from these sources are primarily used to finance working capital and capital expenditure requirements, and are considered adequate to meet the Organization's financial obligations.

Market risk

Market risk is the risk that the fair value or future cash flows of a financial instrument will fluctuate because of changes in market prices. The organization is exposed to market risk on its cash and cash equivalents and investments.

Currency risk

Currency risk refers to the risk that fair value of financial instruments or future cash flows associated with the instruments will fluctuate relative to the Canadian dollar due to changes in foreign exchange rates. The organization holds a portfolio of equity investments in foreign currencies and therefore is exposed to the risk.


11. Comparative figures


Some of the comparative figures have been reclassified to conform to the current year's presentation.




Inspiring the next generation of leaders and decision-makers.

Learn more and get involved at www.aitc.sk.ca

Agriculture 
in the Classroom
Connecting Kids and Agriculture

 3830 Thatcher Avenue
Saskatoon, SK S7R 1A5

 1.844.393.2345

